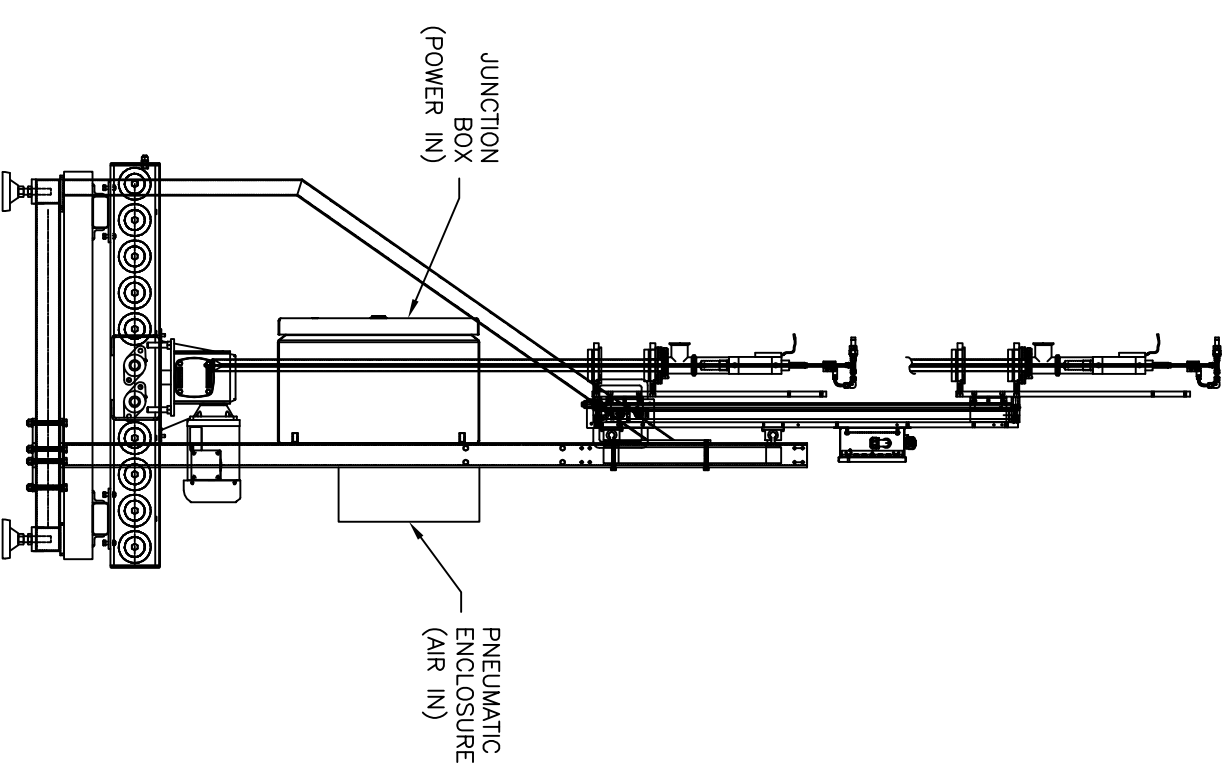
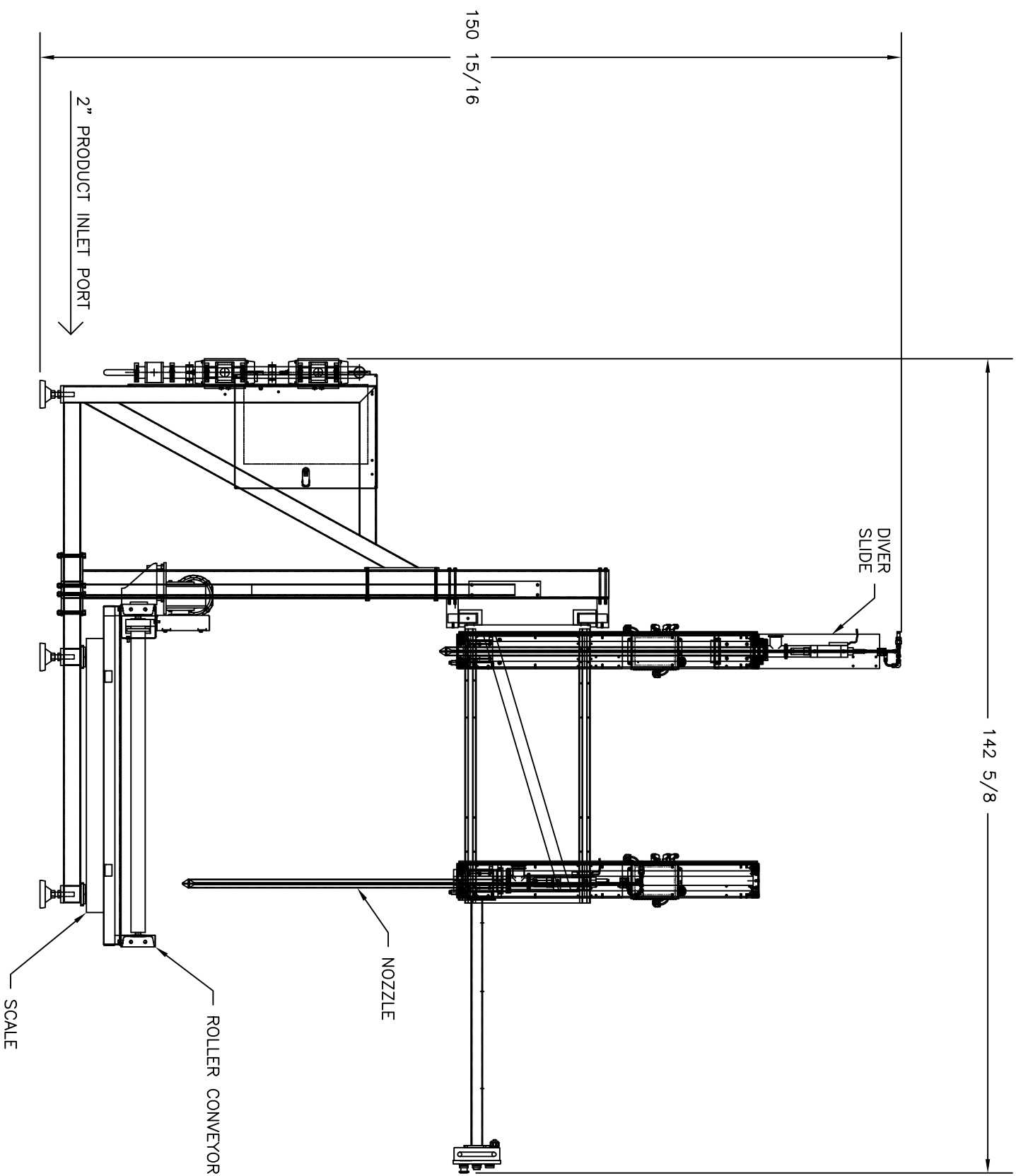



REV.	ECO #	DESCRIPTION	DATE	NAME
A	---	N/A	3/4/15	MJR



- NOTE—
- 1) ALL WELDS SHOULD BE GROUND AND POLISHED SMOOTH TO A #3 (150 GRIT) FINISH.
  - 2) ALL ROUGH EDGES SHOULD BE CLEANED OF ANY BURRS.
  - 3) ALL ANGLES ARE AT 90° UNLESS OTHERWISE NOTED.
  - 4) ALL RADIUS AND CORNERS ARE TO BE A 1/32 UNLESS OTHERWISE NOTED.

DIMENSIONS ARE IN INCHES UNLESS OTHERWISE NOTED REMOVE BURRS AND SHARP EDGES TOLERANCES UNLESS OTHERWISE NOTED: ANGLES 40°-30' FRACTIONS ±1/32 DECIMALS: .X ±.030 .XX ±.010 .XXX ±.005		PROJECT NO. PROJECT NAME PART NAME LAYOUT, MEGAFILL		QTY ONE (1)		SCALE 24X		DRT MJR		DATE 3/4/15		ENGR MJR		SHEET 1 OF 1		DRAWING NO. OM1034-029	
<p style="text-align: center;">  <b>ODEN MACHINERY, INC.</b>          199 FIRE TOWER DRIVE          TONAWANDA, NEW YORK USA 14150          PHONE (716)-874-3622          TOLL FREE (800)-658-3622          FAX (716)-874-3000       </p> <p style="text-align: center; font-size: small;">         THIS MATERIAL IS THE EXCLUSIVE PROPERTY OF ODEN MACHINERY, INC. ANY DUPLICATION, RETENTION OR TRANSMITTAL TO OTHERS IS PROHIBITED WITHOUT PRIOR CONSENT.       </p>																	